



GREASE AND OIL SEPARATORS

www.eneka.lt / info@eneka.lt / Ph. +370 37 377441
Vandžiogalos pl. 94d, LT-47467 Kaunas, Lithuania

- Experience since 1998.
- Located in Kaunas, Lithuania.
- Sustainable manufacturing.
- Certified products according to European and other standards.



- Oil/water separators



- Grease separators

Greasly

- Septic tanks
- Small Wastewater Treatment Plants
- Rainwater Harvesting System
- Pumping Stations

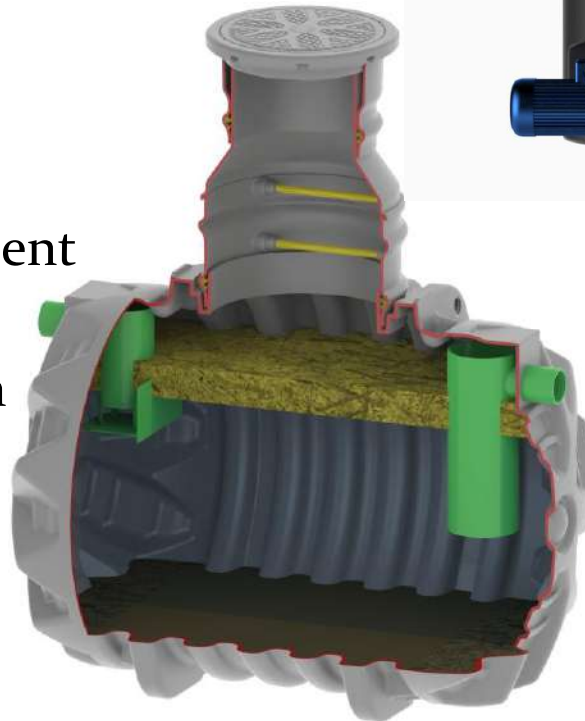
- Sweden
 - Germany
 - Finland
 - Latvia
 - Norway
 - Denmark
 - Belarus
 - Russia
- +
- South-East Asia
 - Middle East
(UAE, Kuwait, Qatar)



- Rotational moulding technology.
- Material: Polyethylene.
- Sustainable process with recyclable materials.



- Removal of grease contaminants from waste water.
- Hotels, restaurants, cafeterias and other catering or food processing operations.
- **Free-standing** and **Underground** models.
- Grease content after treatment <25 mg/l.
- CE marking - complies with EN1825 standard.



CE



ENEKA

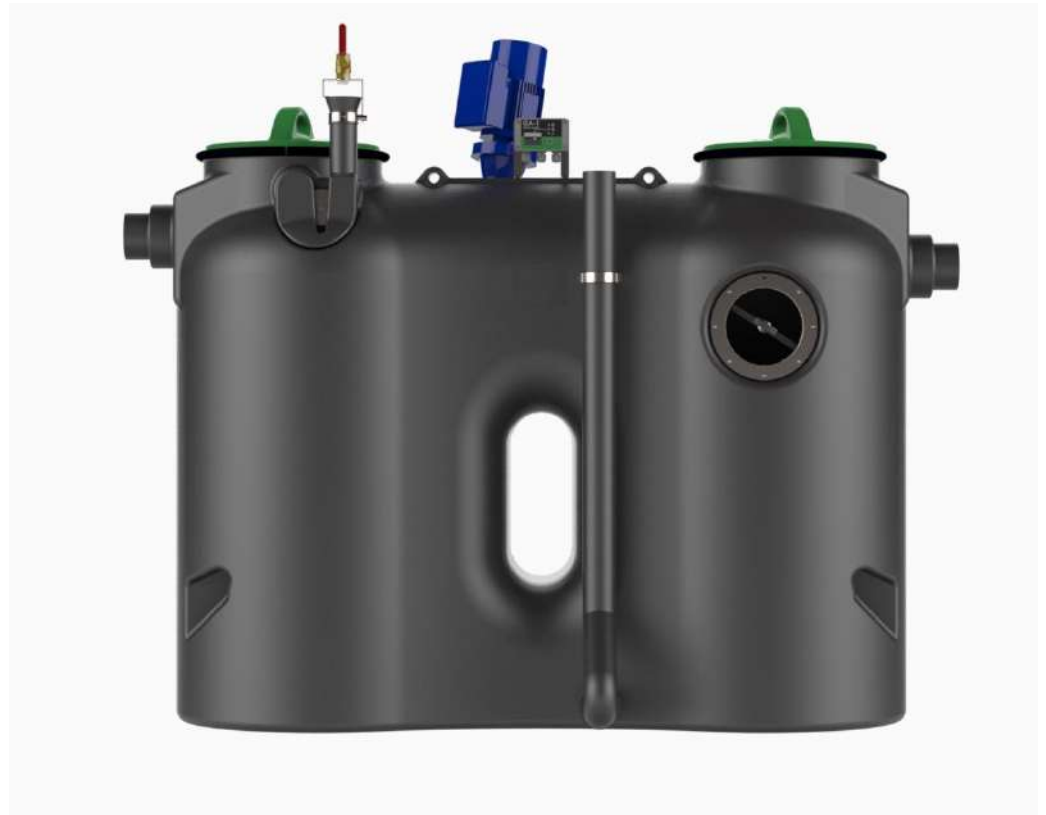
FREE-STANDING GREASE SEPARATORS



*Product of the Year by
Lithuanian Industry
Confederation*

Greasly-A

- Comply with EN 1825-1 and DIN4040-100 standards.
- Rotomoulded „one piece“ body.



Greasily-A

- Advanced design: resistance against internal water pressure and high water temperatures.
- Seamless housing is completely air- and watertight.
- Smooth internal surfaces facilitate cleaning.



Greasly-A

- Access covers of the separator are closed by locking rings with gaskets for odour-free operation.
- No need to open cover during the maintenance.



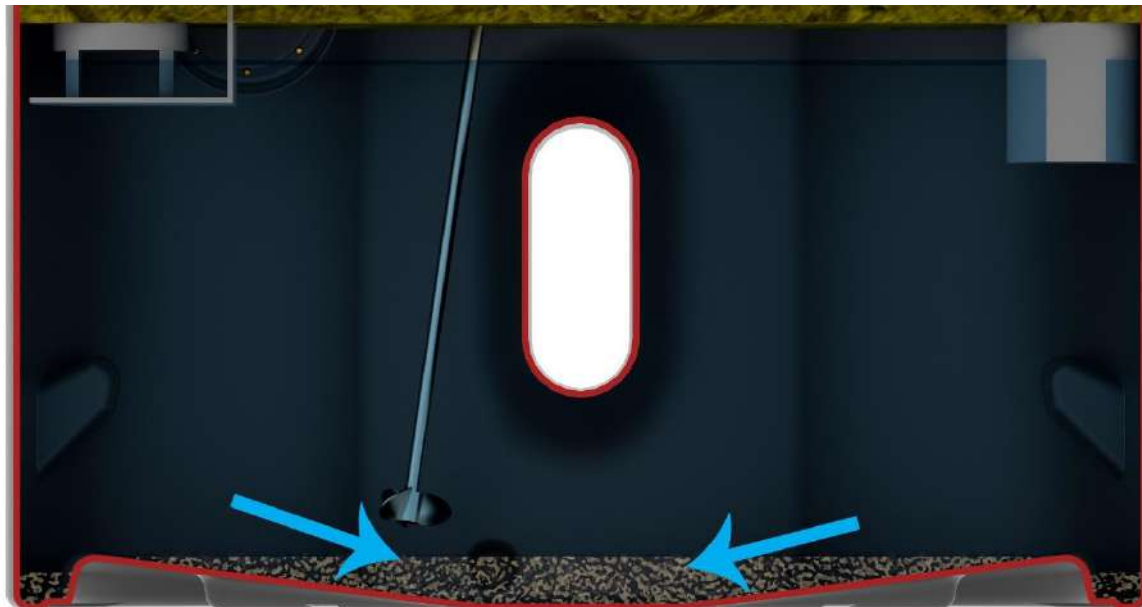
- Width of separator housing NS2/NS4 is 700 mm only.
- A good choice for installation in spaces with narrow access.



- Inlet or outlet pipe can be connected from left or right side according to layout of existing pipeline.



- The bottom part is inclined towards center.
- Accumulated sludge can be completely extracted from the lowest point of separator.



Greasly-A

- A separator with special inlet and outlet parts for efficient grease removal.
- 2 airtight lids with seals and locking rings made of steel.
- Cover is to be opened for disposal.



Manual disposal system 1,
including:

- Inspection window.
- Extraction pipe.
- Refilling unit.



Greasly-A

Manual disposal system 2,
including:

- Mixer with manual switch.
- Inspection window.
- Extraction pipe.
- Refilling unit.
- Grease alarm.



Manual disposal system 3,
including:

- Disposal Pump.
- Manual 3-way valve (switching between Mixing & Disposal).
- Inspection window.
- Mixing and Disposal pipes.
- Manual Refilling unit.
- Grease alarm (optional).



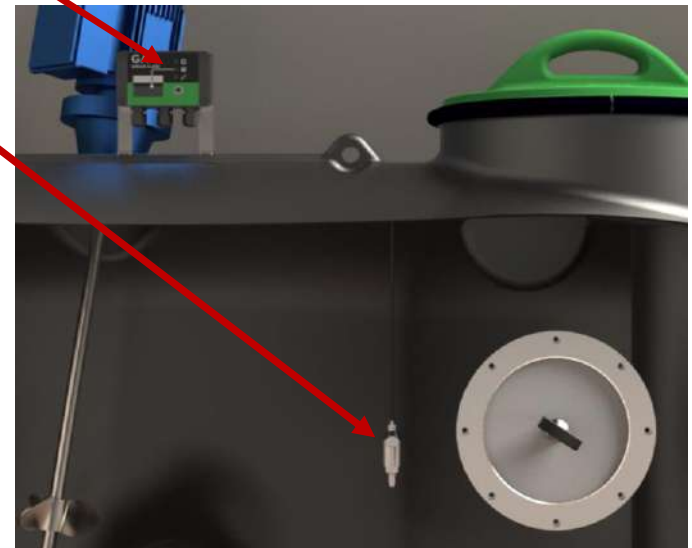
Components:

- Grease alarm.
- Inspection window.
- Mixer.
- Disposal pump.
- Refilling unit with solenoid valve.
- Control panel for program-controlled disposal process.
- Remote controller (optional).

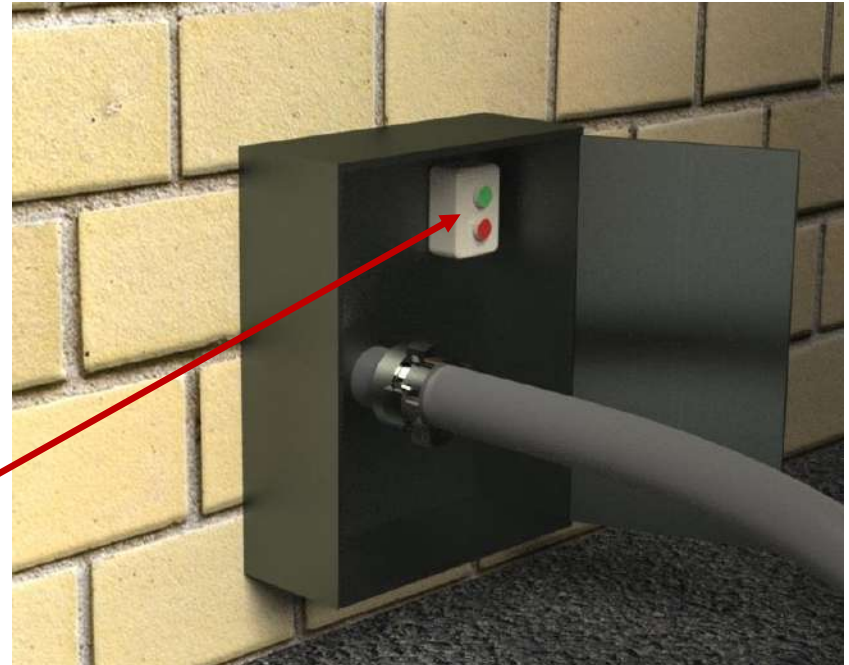


Greasly-A

- The monitor of separator alarm is mounted on the body of the separator.
- The grease sensor is submerged in water.
- The alarm is actuated when grease storage is full.



- Before disposal, a hose of the disposal truck shall be connected to the extraction nozzle.
- The disposal process can be started by the Remote controller.



- Mixer with 2 stainless steel propellers.
- Agitating for the preset period to mix the accumulated grease and sludge with water.
- Mixing facilitates the complete emptying of the separator.



- The heavy-duty disposal pump with Vortex impeller.
- The complete contents of the separator is discharged to the disposal truck.
- Standard pump 2,2kW / 400V, capacity 30 m³/hr, lifting height 8,5 m



- Automatic refilling unit with solenoid valve.
- After emptying, the valve is opened for the preset period.
- The separator is filled up by the freshwater.
- Now the separator is ready for operation.

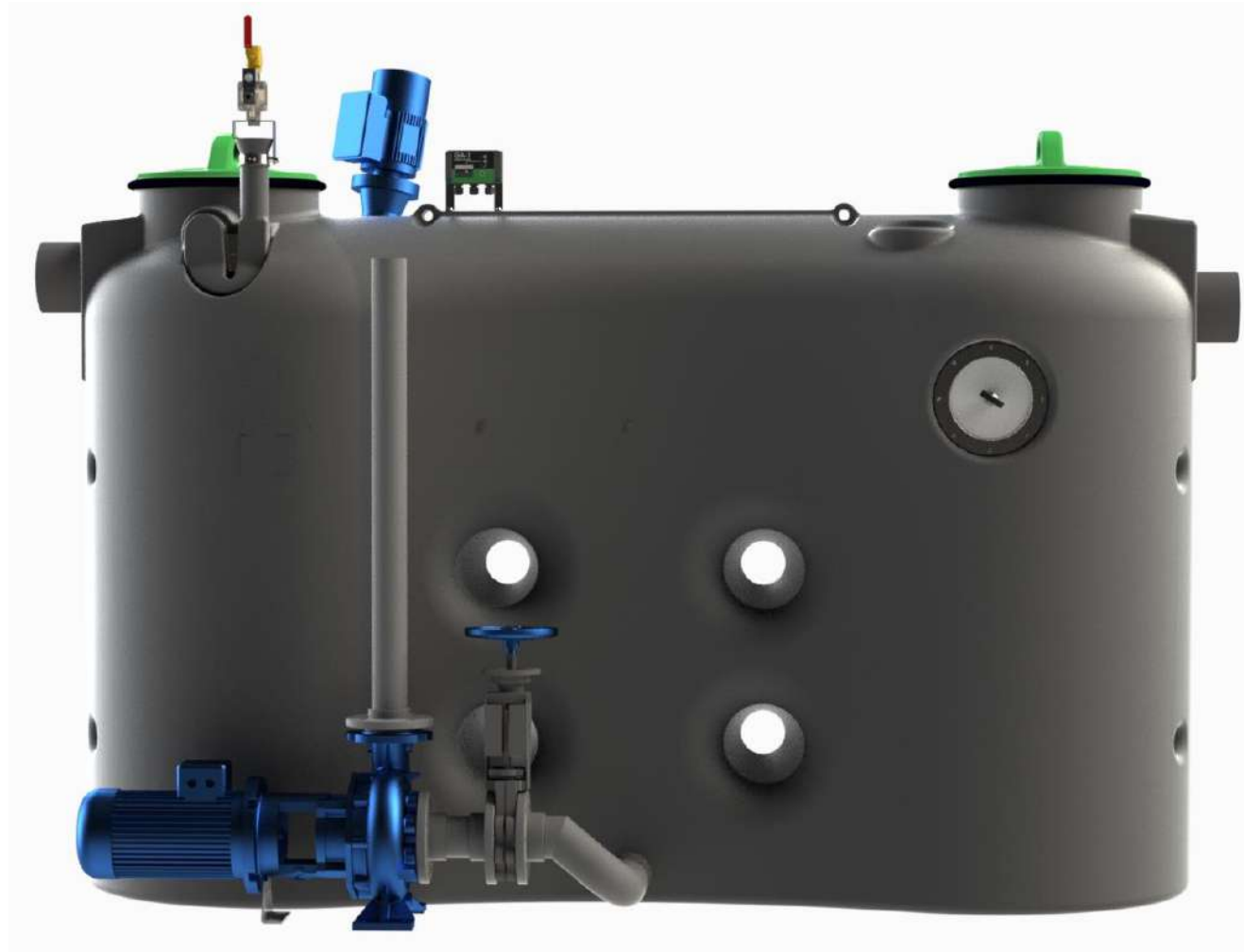


- Flow rates 7, 10, 15 and 20 l/s.
- Cylindrical design.



Greasly-A

- New longitudinal housings to be launched in 2022.
- Flow rates 7 & 10 l/s.



Greasly-A



Greasly-A



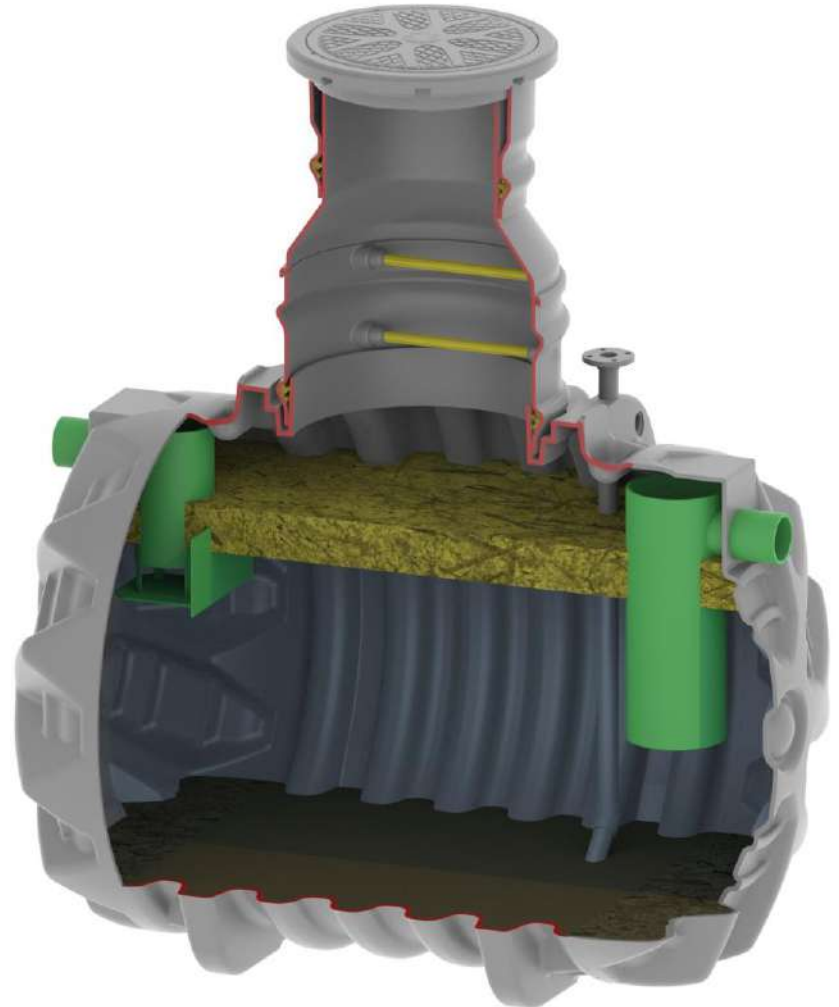
ENKA UNDERGROUND GREASE SEPARATORS

- Contains no moving parts.
- Reliable operation.
- Integrated sludge trap.
- Service is limited by removal of accumulated grease & sludge.



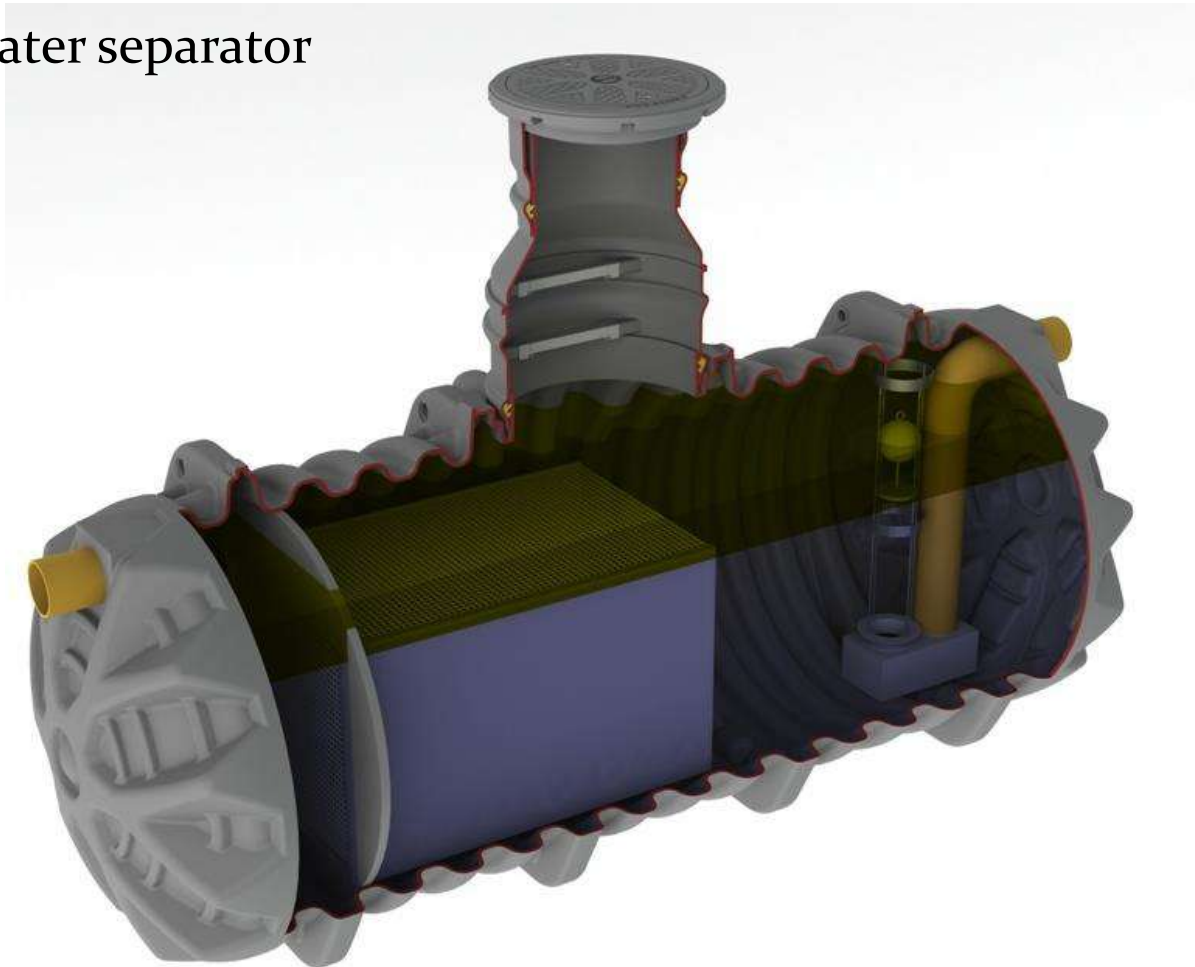
Greasly-B

- A special water path through separator.
- Solids and other particles heavier than water settle in the sludge trap.
- Grease particles, lighter than water, are driven upwards by gravity.
- Grease is accumulated on water surface to be disposed during the maintenance.
- Clean water is discharged through the outlet.



Greasly-B

- SEPKO is Class I Oil/water separator according to EN 858-1
- Integrated Sludge Trap
- CE marking
- No moving parts
- Flow rates
1.5 to 150 l/sec

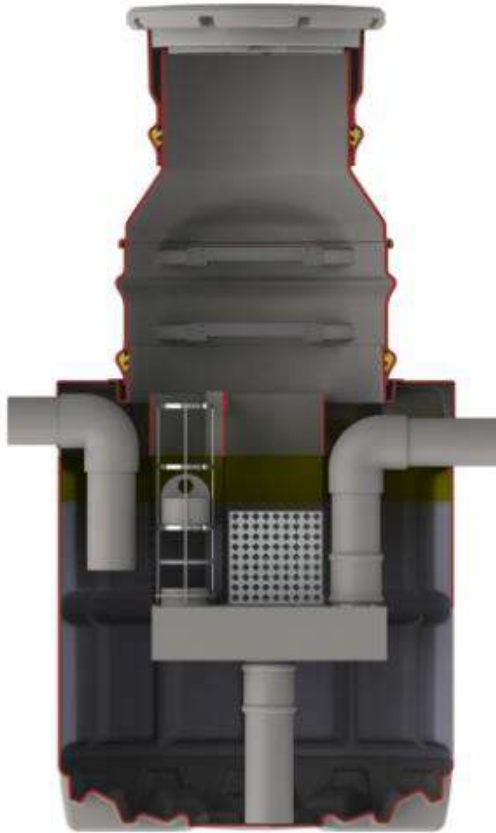


Rain and process water treatment:

- Road terrains
- Parking areas
- Petrol stations
- Car washes
- Industrial applications, etc.

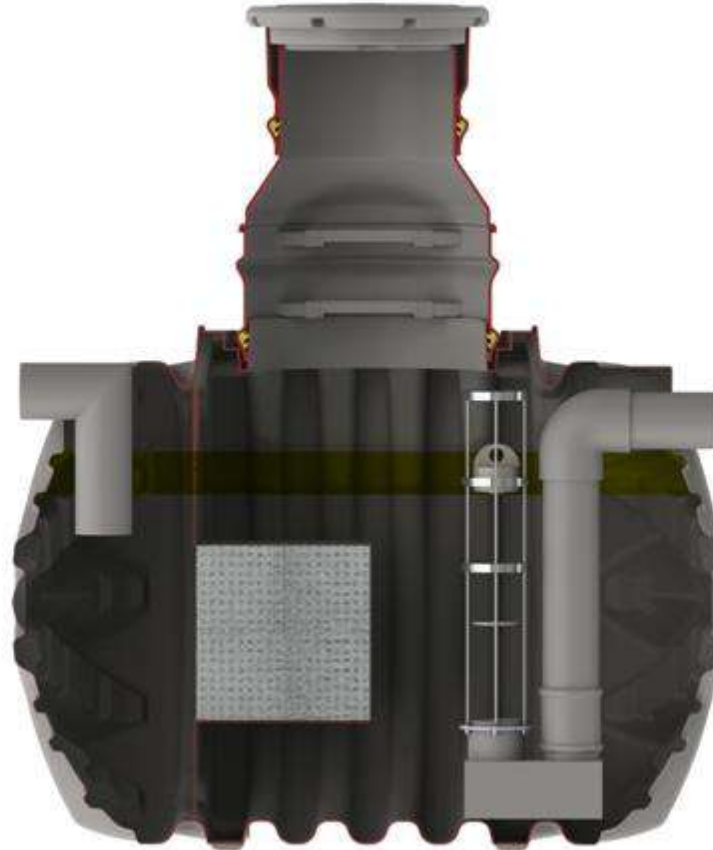


Vertical model



Flow rate from 1,5 to 6 l/s

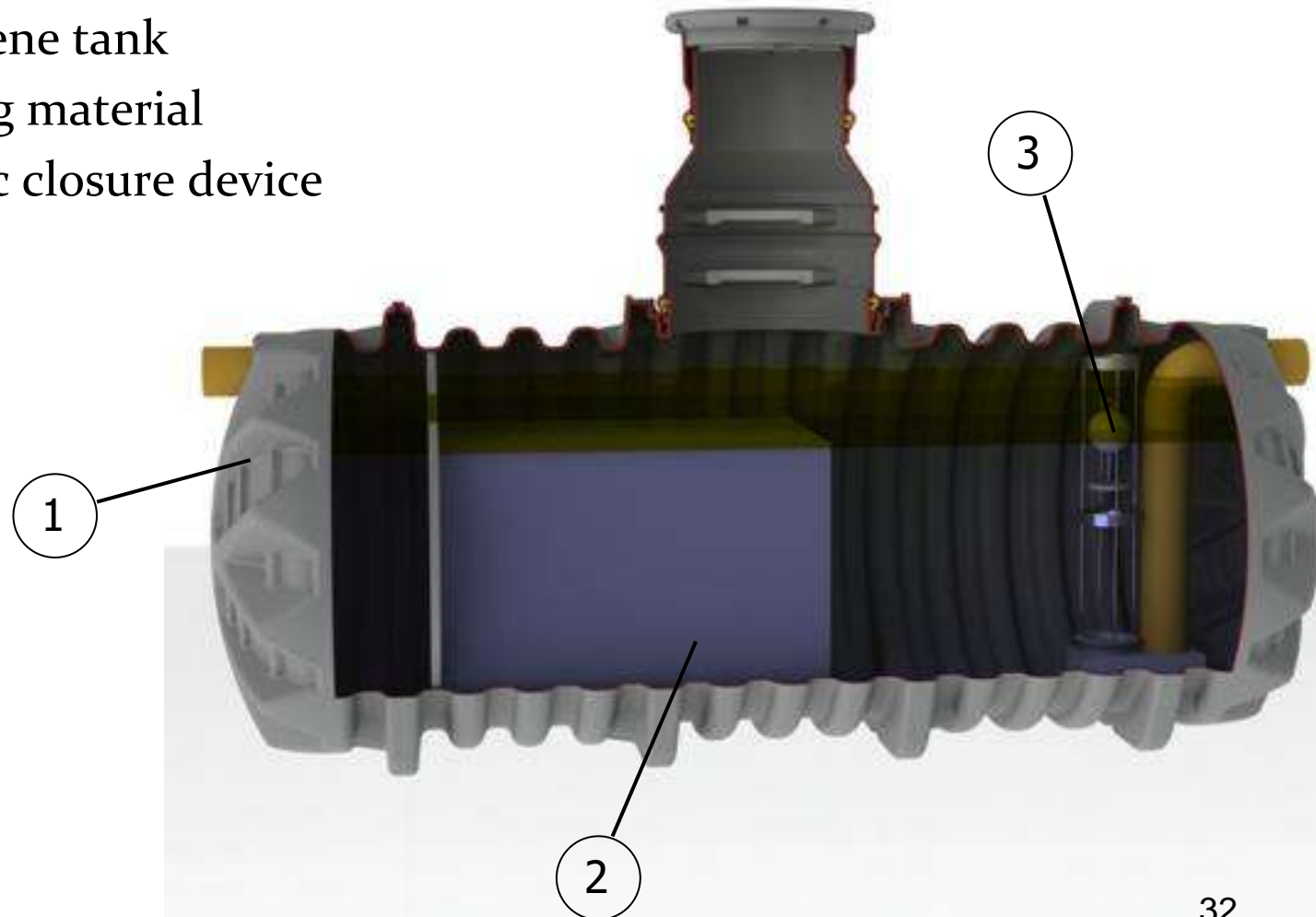
Horizontal model



Flow rate from 10 to 150 l/s

Main components:

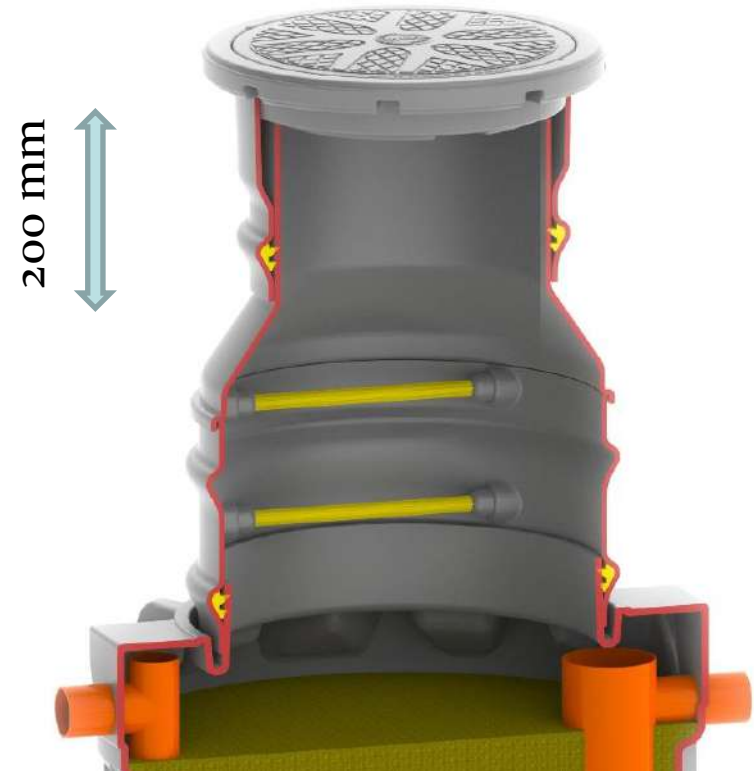
1. Polyethylene tank
2. Coalescing material
3. Automatic closure device



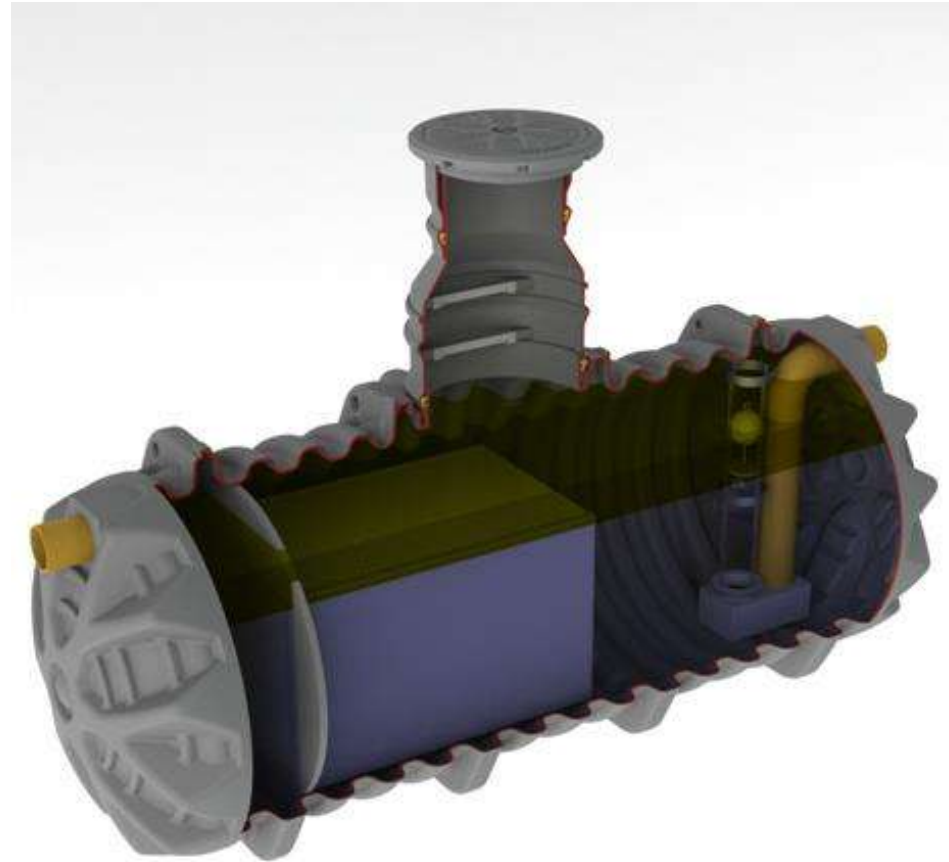


- Perfect stiffness at low weight
- Advanced design and structure of the ribs
- Resistance against ground loads and ground water

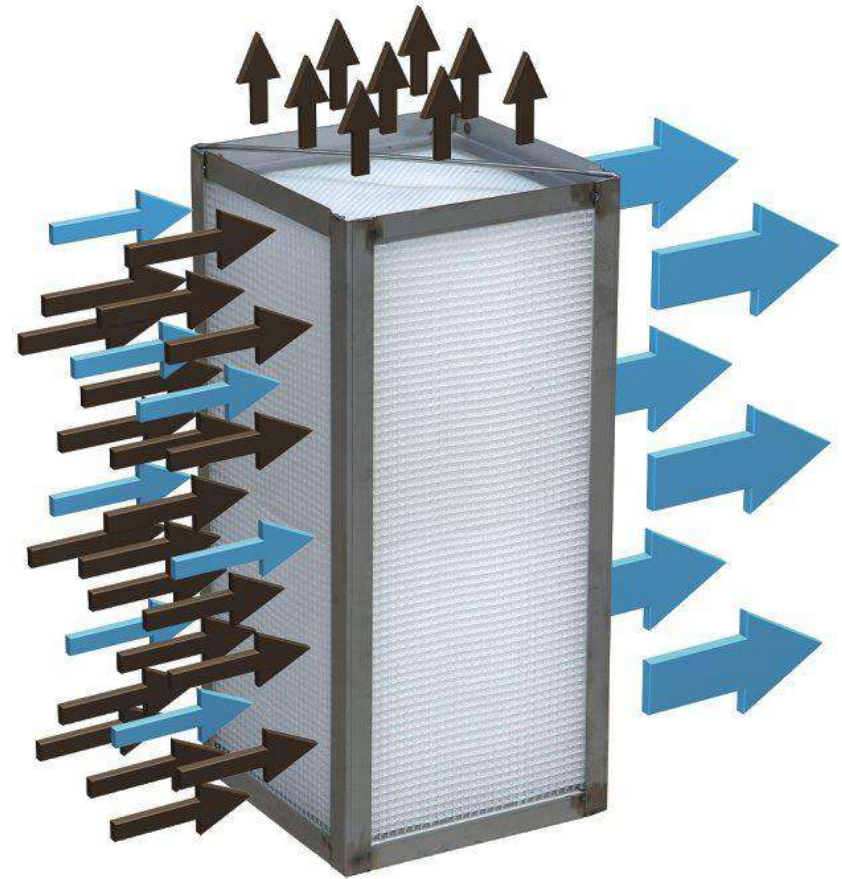
- Cover adjustment to the ground surface in the range of 200 mm
- Height 750 to 2500 mm
- Integrated ladder for easy access into the tank
- Watertightness:
- 1st seal between maintenance shaft and telescopic lid
- 2nd between tank body and maintenance shaft
- Standard lids from class A35 (3.5 t) to class D400 (40 t)



- In the first primary settling section solids and big oil droplets are removed by gravity.
- Water is directed through the coalescing media.
- By contacting the oleophilic surface, the oil particles are captured, they merge with other particles becoming larger.
- Bigger oil droplets are driven upwards to the water surface.
- As solid deposits accumulate on the coalescing media they increase in mass and eventually slough off into the sump.



- **Resistance to plugging** by solid particles due to self cleaning design.
- **Coalescing surface** (approx. 450 m²/m³) is more than **3 times larger** as other commonly used media.
- Special **oleophilic** (oil attractive) material.
- 99,99+ % removal of free and dispersed oil.
- No replacement parts.
- Years of trouble-free service.



Coalescing material
plugged



Verstopfter Koaleszenzfilter:
Wasserablenkung ist gestört,
Abscheiderentsorgung und
Wartung erforderlich

- Flow distribution (bypass) system is dividing the peak rainwater flow during heavy shower.
- $\frac{1}{3}$ of total rainfall flow is directed to oil/water separator, and the excess flows via bypass.
- Ensuring that nominal flow of the separator is not exceeded.



- SEPKO incl. integrated bypass line
- Dividing the peak rainwater flow during heavy rain
- Available for all SEPKO types
- Especially economical for smaller sizes



- Warns of excessive levels of oil, liquid and sludge
- Model IP65: up to 3 probes
- Model UTA: one probe
- Ensures safe and economic operation of separators
- Indicates when separator needs emptying, i.e. reduces waste management costs
- Atex approved: Baseefa 08ATEX0171X
- Automated and remote monitoring
- Visual or audible alarm



- Every nominal size of oil/water separators has been tested according to standard EN 858-1
- Testing = determining of nominal size and class of separators
- Oil content after treatment <5 mg/l

CE



- No replacement filters
- Emptying of accumulated oil and sludge by vacuum truck
- Cleaning of coalescing modules by high pressure cleaner (once a year)



**THANK YOU
FOR YOUR ATTENTION!**